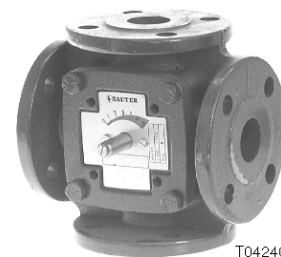


MH32F, MH42F: Flanged mixing valves, PN 6

Units used for continuous control of warm-water heating plants.

Valve body made of cast iron (GG20) with smooth, drilled flanges. Valve shoe made of brass. Spindle sealed by means of double O-ring packing. Manual adjustment by means of a lever. Permissible installation position: drive in upright vertical to horizontal position.



T04240

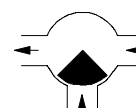


Y07546



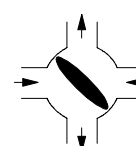
Y07547

Tree-way valve



B01373

Four-way valve



B01374

Type	Nominal width DN	k_{VS} -value m ³ /h	Max. leakage rate % of k_{VS}	Weight kg
Three-way valve; Cover of zinc, shaft of brass				
MH32F 20 F200	20	12	1	2,7
MH32F 25 F200	25	18	1	3,5
Three-way valve; Cover of grey cast iron, shaft of stainless steel				
MH32F 32 F200	32	28	1	4,6
MH32F 40 F200	40	44	1	5,6
MH32F 50 F200	50	66	1	7,9
MH32F 65 F200	65	100	1	9,2
MH32F 80 F200	80	150	1	14,2
MH32F 100 F200	100	225	1	19,0
MH32F 125 F200	125	310	1	25,8
MH32F 150 F200	150	420	1	35,5
Four-way valve; Cover of grey cast iron, shaft of stainless steel				
MH42F 32 F200	32	28	1,5	5,7
MH42F 40 F200	40	44	1,5	7,1
MH42F 50 F200	50	66	1,5	8,3

Nominal pressure	PN 6	Permissible operating temp.	2...110 °C
Max. perm. operating pressure	6 bar	Dimension drawings	5M106
Control characteristic	linear	Combinations with	AR30 MV 505472
Angle of shoe rotation	90°	ASM124	MV 505477
		ASM105/115	MV 505840

Accessories

0360392 . . . Counter flange, smooth, PN 6, incl. asbestos-free gasket.

Specify when ordering: DN 20 = /020, DN 25 = /025

DN 20 25 32 40 50 65 80 100 125 150

0361775 000 Assembly kit for drive AR30

0361977 001 Assembly kit for drive ASM 124

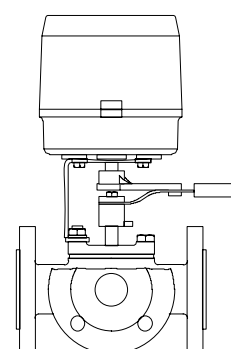
0361977 002 Assembly kit for drive ASM 105, 115

Combination with electric motor drive AR30 and actuating drive ASM:

Drive	Input Run time	AR30	AR30	ASM	ASM	ASM	ASM	ASM	ASM
		W23 3-pt. 120s	W23S 0...10 V 120s	105 2/3-pt. 30s	105 2/3-pt. 120s	105S 0...10 V 60/120s	115 2/3-pt. 120s	115S 0...10 V 60/120s	124 ¹⁾ 2/3-pt. 120s
Three-way valve:									
MH32F 20 F200	1,0								
MH32F 25 F200	1,0								
MH32F 32 F200	1,0								
MH32F 40 F200	1,0								
MH32F 50 F200	0,5								
MH32F 65 F200	0,5								
MH32F 80 F200	0,5								
MH32F 100 F200	0,5								
MH32F 125 F200	0,5								
MH32F 150 F200	0,5								
Four-way valve:									
MH42F 32 F200	1,0								
MH42F 40 F200	1,0								
MH42F 50 F200	0,5								

¹⁾ It is not possible to fit auxiliary contacts or a potentiometer with this combination

Complete type designation: Valve and drive with corresponding F-version and assembly parts
 Valve: F-version, technical data and accessories, see table of types above
 Drive: F-version, technical data and accessories, see Section 51
 Example: MH32F 40 F200/AR30 W23 F001/0361775 000



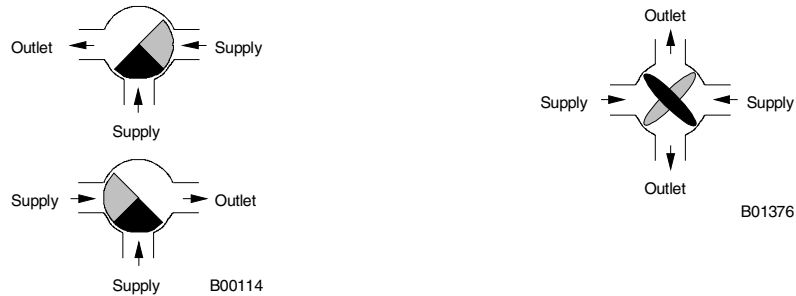
B01375a

Operation

Turning the spindle will continuously open the warm-water port and equally close the cold-water port (heater return flow). This increases the temperature of the mixed water (in the heater flow) at an approximately constant flow rate.

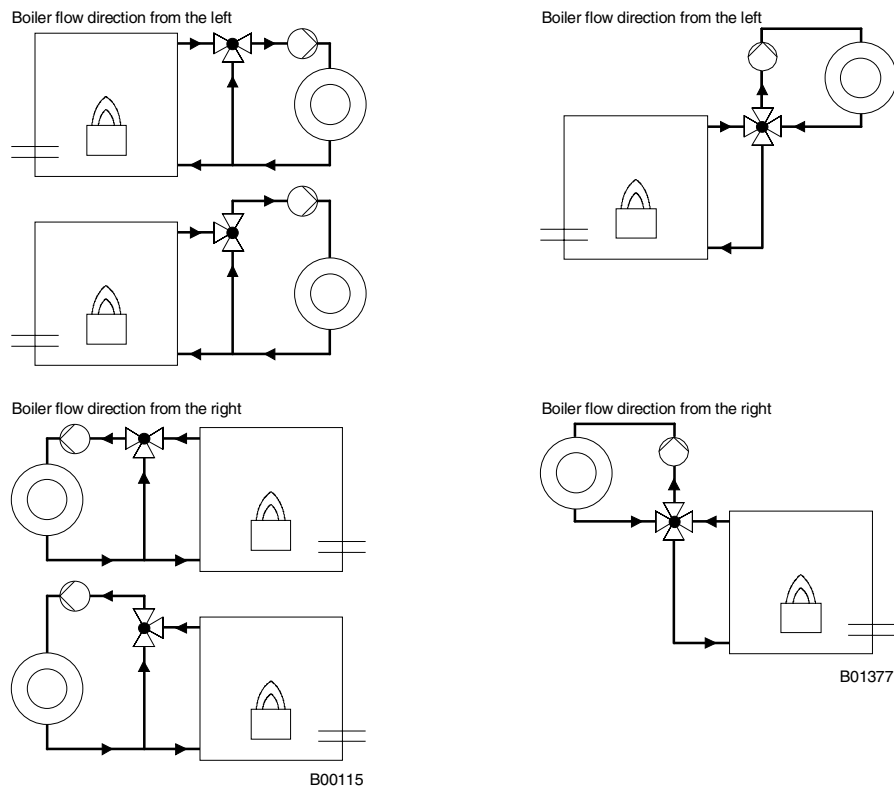
When the warm-water port is closed, a bypass to the boiler return is opened simultaneously in four-way versions in order to enable thermal circulation.

For automatic operation, a reversible drive with a rotating angle of 90° can be used. After the coupling has been released, the shoe can be adjusted manually.



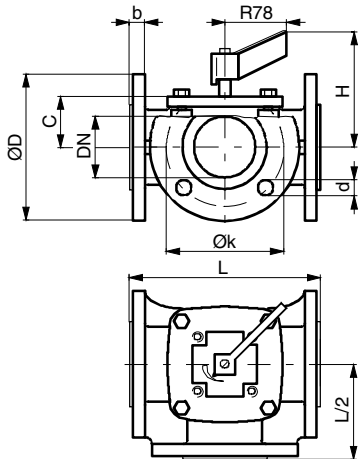
Additional technical data

Body dark grey as per RAL 7021. Flanges as per VSM 18643 (DIN 2501). Threaded bore holes for console and motor drive mounting. Steel lever with plastic handle for manual adjustment. Scale marked on both sides for the following installation options: boiler flow direction from the left, boiler flow direction from the right.



Dimension drawings 5M106

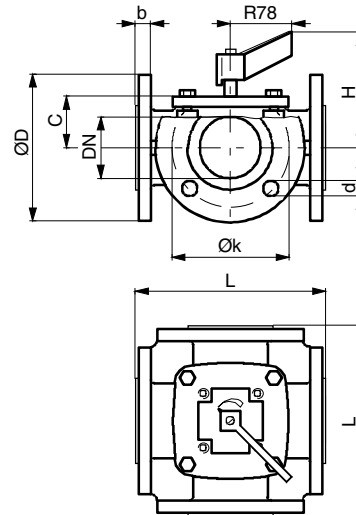
MH32F



DN	H	C	L	D	k	b	d
20	76	37	140	90	65	14	11,5 (4x)
25	76	37	150	100	75	14	11,5 (4x)
32	98	40	160	120	90	16	15 (4x)
40	98	40	175	130	100	16	15 (4x)
50	112	51	195	140	110	16	15 (4x)
65	116	55	200	160	130	16	15 (4x)
80	123	62	240	190	150	16	18 (4x)
100	133	72	265	210	170	18	18 (4x)
125	142	81	300	240	200	20	18 (8x)
150	149	88	350	265	225	20	18 (8x)

M360972b

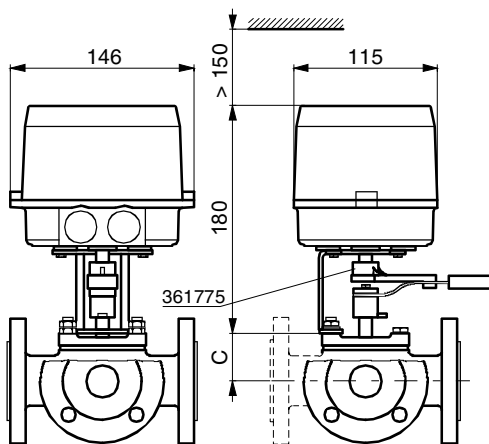
MH42F



DN	H	C	L	D	k	b	d
32	98	40	160	120	90	16	15 (4x)
40	98	40	175	130	100	16	15 (4x)
50	112	51	195	140	110	16	15 (4x)

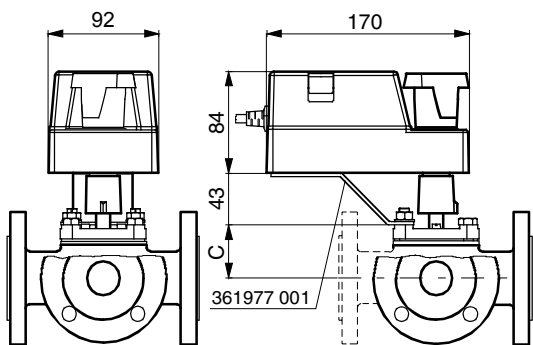
M360974b

MH32F and MH42F with AR30 drive



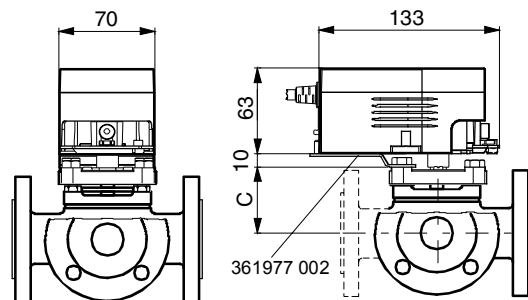
K01379c

MH32F and MH42F with ASM 124 drive



K07107c

MH32F with ASM 105, 115 drive
DN20 to DN80



K10208